

dedicated to the participants of the United Kingdom's
National Association of Choirs Millennium Concert 2000

LET THE EARTH RESOUND

for 2-part / S.S.A. voices and keyboard
with optional trumpet, instrumental packet
or SoundTrax CD*

Words and Music by
SALLY K. ALBRECHT

Fanfare (♩ = ca. 96)

TRUMPET

Fanfare (♩ = ca. 96)

KEYBOARD

mp cresc.

mp grad. cresc.

4 PART I (Soprano) *f*

Let the trum-pet sound!

PART II (Alto) *f*

Let the trum-pet sound!

* Also available for S.A.T.B., Level Four (18646) and S.S.A.B., Level Three (18647).

Trumpet part is on pages 15-16.

SoundTrax CD available (18649). SoundPax available (18650) - includes score and set of parts for 3 Trumpets, 2 Trombones, Timpani, and Snare Drum.

Copyright © MCMXCIX by Alfred Publishing Co., Inc.
All Rights Reserved. Printed in USA.

7

Let the earth re-sound with the sound of

Let the earth re-sound with the sound of

10

With drive ($\text{♩} = \text{ca. } 138$)

mu - sic, with the sound of life!

mu - sic, with the sound of life!

With drive ($\text{♩} = \text{ca. } 138$)

With drive ($\text{♩} = \text{ca. } 138$)

16

mf

14

Let the earth re - sound with sounds of

18

mu - sic. Let the earth re -

Let the earth re - sound with sounds of mu - sic.

21

cresc.

f

sound with songs of joy. _____ Sing

cresc.

f

Let the earth re - sound with joy. Sing

f

cresc.

f

24

"Glo - ri - a in ex - cel - sis." Bring forth a ju - bi-lant

"Glo - ri - a in ex - cel - sis." Bring forth a ju - bi-lant

27

song. Sing "Glo - ri - a___ in ex - cel - sis," join the

song. Sing "Glo - ri - a___ in ex - cel - sis," join the,

30

throng. _____

come join___ the throng.

36

mf

34

Let the earth_ re - joice with sounds of

mf

38

mf

sing - ing. _____ Let the earth_ re - joice with one great

mf

Let the earth_ re - joice with sound of sing - ing. _____

42 *cresc.* *f* 44

voice. _____ Sing "Glo - ri - a ___ in ex -

Let the earth ___ with one great voice sing, "Glo - ri - a ___ in ex -

cresc. *f*

cresc. *f*

45

cel - sis." Bring forth a ju - bi-lant song. Sing

cel - sis." Bring forth a ju - bi-lant song. Sing

48

“Glo - ri - a in ex - cel - sis,” join the throng

“Glo - ri - a in ex - cel - sis,” join the, come join the

51

decresc.

in song.

decresc.

throng in song.

decresc.

56

p

Rise up, all ye peo-ple. Lift your voices in har-mo-ny.

p

Rise up, all ye peo-ple. Lift your voices in har-mo-ny.

7

60

cresc.

mf

decresc.

Let your song ring forth a-cross the sea.

cresc.

mf

decresc.

Let your song ring forth a-cross the sea.

64

p



Rise up, — all ye peo-ple. Clap your hands, — let the trum-pet sound.

p



Rise up, — all ye peo-ple. Clap your hands, — let the trum-pet sound.



p

68

cresc.



Sing with joy, — let all the earth re - sound! _____

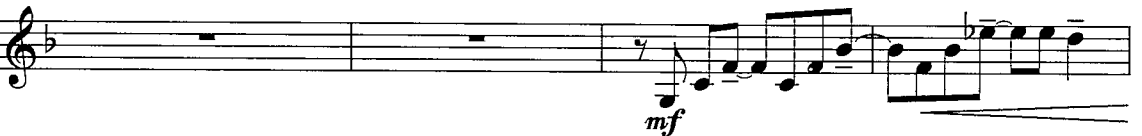
mf

cresc.



Sing with joy, — let all the earth re - sound! _____

mf



mf



cresc.

mf

72 *f*

Let the world_ u - nite in one full cho - rus._____

Let the world_ u - nite in one full cho - rus._____

f

f

76

Let the world_ u - nite in joy - ous song._____ Sing

Let the world_ u - nite in joy - ous song._____ Sing

80

Musical staff for voice 1, measures 80-83. The melody begins with a half note G4, followed by quarter notes A4, B4, and C5. It then moves to a half note D5, followed by quarter notes E5, F5, and G5. The phrase concludes with a half note G5 and a quarter rest.

“Glo - ri - a ___ in ex - cel - sis.” Bring forth a ju - bi - lant song. Sing

Musical staff for voice 2, measures 80-83. The melody begins with a half note G4, followed by quarter notes A4, B4, and C5. It then moves to a half note D5, followed by quarter notes E5, F5, and G5. The phrase concludes with a half note G5 and a quarter rest.

“Glo - ri - a ___ in ex - cel - sis.” Bring forth a ju - bi - lant song. Sing

Musical staff for voice 3, measures 80-83. The melody begins with a half note G4, followed by quarter notes A4, B4, and C5. It then moves to a half note D5, followed by quarter notes E5, F5, and G5. The phrase concludes with a half note G5 and a quarter rest.

Piano accompaniment for measures 80-83. The right hand features chords and moving lines, while the left hand provides a steady bass line with quarter notes.

84

Musical staff for voice 1, measures 84-87. The melody begins with a half note G4, followed by quarter notes A4, B4, and C5. It then moves to a half note D5, followed by quarter notes E5, F5, and G5. The phrase concludes with a half note G5 and a quarter rest.

“Glo - ri - a ___ in ex - cel - sis,” join the throng. _____

Musical staff for voice 2, measures 84-87. The melody begins with a half note G4, followed by quarter notes A4, B4, and C5. It then moves to a half note D5, followed by quarter notes E5, F5, and G5. The phrase concludes with a half note G5 and a quarter rest.

“Glo - ri - a ___ in ex - cel - sis,” join the, come join ___ the throng.

Musical staff for voice 3, measures 84-87. The melody begins with a half note G4, followed by quarter notes A4, B4, and C5. It then moves to a half note D5, followed by quarter notes E5, F5, and G5. The phrase concludes with a half note G5 and a quarter rest.

Piano accompaniment for measures 84-87. The right hand features chords and moving lines, while the left hand provides a steady bass line with quarter notes.

mf

Let the earth_ re - sound with sounds of mu - sic. _____

mf

Let the earth_ re - sound with sounds of mu - sic. _____

mf *cresc.*

mf

cresc.

92 *f*

ff

Let the earth_ re - sound with sounds of mu - sic, _____ with

f

ff

Let the earth_ re - sound with sounds of mu - sic, _____ with

f

cresc.

f

cresc.

96

mu - sic. _____

mu - sic. _____

ff

ff

LET THE EARTH RESOUND

B \flat TRUMPET

Words and Music by
SALLY K. ALBRECHT

Fanfare ($\text{♩} = \text{ca. } 96$)

mp cresc.

f

With drive ($\text{♩} = \text{ca. } 138$)

rit.

3 16 7

Copyright © MCMXCIX by Alfred Publishing Co., Inc.
All rights reserved. Printed in USA.